

REYNOLDS BUSINESS PARK

MULTI-TENANT BUSINESS PARK



1340 • 1350 • 1360 • 1370 REYNOLDS
IRVINE, CA

PROPERTY SUMMARY

This state-of-the-art project is in the heart Orange County in the city of Irvine, California. The property has direct freeway access to Newport-(55), San Diego (405) freeways and the Interstate (5) as well as John Wayne airport. The business park delivers "Class A" creative office, R&D, Retail and Industrial space with an abundance of parking.

For more information, please contact:



TIM WALKER
office: 949.724.4741
timwalker@lee-associates.com
DRE #: 01218076



HAYDEN TOLAND
cell: 310.903.7821
htoland@lee-associates.com
DRE #: 02215762



MILES TOLAND
cell: 310.903.7806
Mtoland@lee-associates.com
DRE #: 02216740

Visit

www.reynolds-bp.com

LEE & ASSOCIATES
COMMERCIAL REAL ESTATE SERVICES
NEWPORT BEACH

The information contained herein has been obtained from the property owner or other third party and is provided to you without verification as to accuracy. We (Lee & Associates, its brokers, employees, agents, principals, officers, directors and affiliates) make no warranty or representation regarding the information, property, or transaction. You and your attorneys, advisors and consultants should conduct your own investigation of the property and transaction.

REYNOLDS BUSINESS PARK

MULTI-TENANT BUSINESS PARK

PROPERTY FEATURES



- » ±140,294 Sq. Ft. Multi-Tenant Business Park
- » Direct access to John Wayne Airport
- » Direct Access to Newport (55) and San Diego (405) Freeways, Exposure to MacArthur Boulevard
- » Ample Parking
- » R&D/Industrial, Creative Office, Showroom / Retail Commercial Uses



1340 • 1350 • 1360 • 1370 REYNOLDS
IRVINE, CA

For more information, please contact:



TIM WALKER
office: 949.724.4741
timwalker@lee-associates.com
DRE #: 01218076



HAYDEN TOLAND
cell: 310.903.7821
htoland@lee-associates.com
DRE #: 02215762



MILES TOLAND
cell: 310.903.7806
Mtoland@lee-associates.com
DRE #: 02216740

Visit

www.reynolds-bp.com

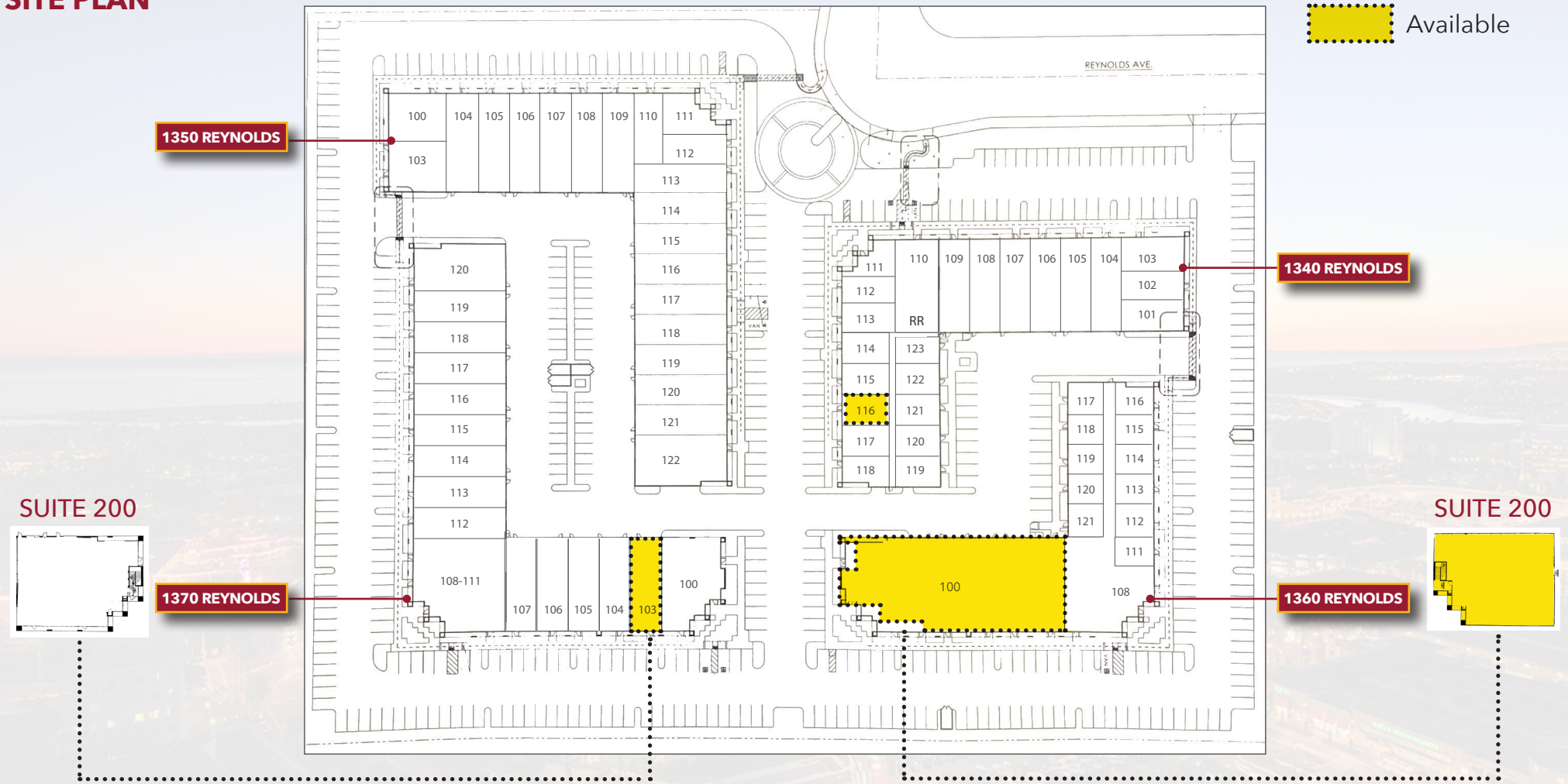


The information contained herein has been obtained from the property owner or other third party and is provided to you without verification as to accuracy. We (Lee & Associates, its brokers, employees, agents, principals, officers, directors and affiliates) make no warranty or representation regarding the information, property, or transaction. You and your attorneys, advisors and consultants should conduct your own investigation of the property and transaction.

REYNOLDS BUSINESS PARK

MULTI-TENANT BUSINESS PARK

SITE PLAN



For more information, please contact:



TIM WALKER
office: 949.724.4741
timwalker@lee-associates.com
DRE #: 01218076



HAYDEN TOLAND
cell: 310.903.7821
htoland@lee-associates.com
DRE #: 02215762



MILES TOLAND
cell: 310.903.7806
Mtoland@lee-associates.com
DRE #: 02216740

1340 • 1350 • 1360 • 1370 REYNOLDS
IRVINE, CA

Visit

www.reynolds-bp.com

LEE & ASSOCIATES
COMMERCIAL REAL ESTATE SERVICES
NEWPORT BEACH

The information contained herein has been obtained from the property owner or other third party and is provided to you without verification as to accuracy. We (Lee & Associates, its brokers, employees, agents, principals, officers, directors and affiliates) make no warranty or representation regarding the information, property, or transaction. You and your attorneys, advisors and consultants should conduct your own investigation of the property and transaction.

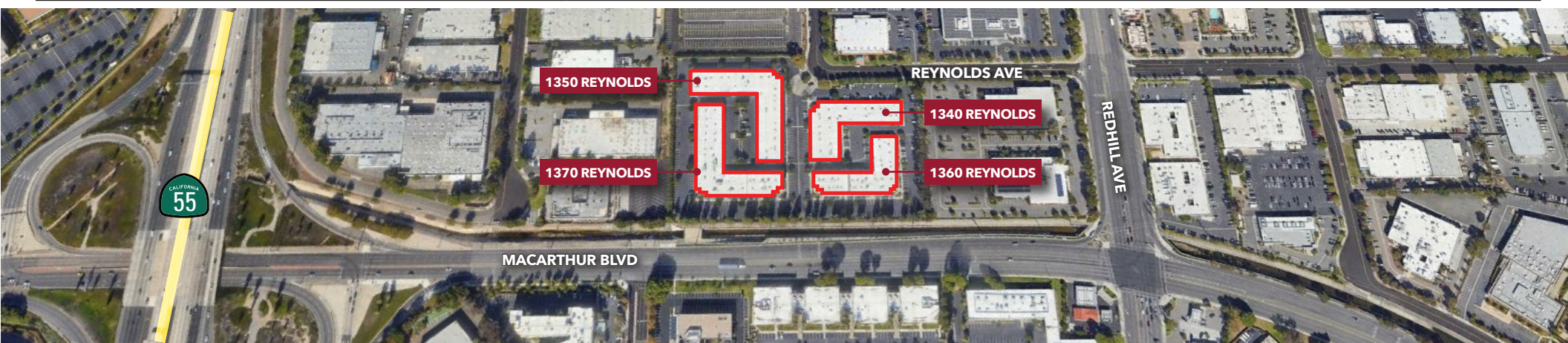
REYNOLDS BUSINESS PARK

MULTI-TENANT BUSINESS PARK



AVAILABLE SUITES

BLDG	SUITE	SF	RATE/PSF	COMMENTS
1340	116	±980	TBD	Creative office showroom (open office to suite)
1360	100/200	±19,981	TBD	Corp. headquarters, quality build-out (TI's to suite new tenant), 4 ground level loading doors
1360	100	±13,581	TBD	Creative office, R&D, showroom & warehouse with 4 loading doors (T.I.'S. to suite)
1360	200	±6,462	TBD	Creative office, R&D
1360	100 A	±5,522	TBD	Creative office, R&D, showroom & warehouse with 1 loading door (T.I.'S. to suite)
1360	100 C	±1,872	TBD	Creative office, R&D, showroom & warehouse with 1 loading door (T.I.'S. to suite)
1360	100 D	±1,618	TBD	Creative office, R&D, showroom & warehouse with 1 loading door (T.I.'S. to suite)
1360	100 B	±2,107	TBD	Creative office, R&D, showroom & warehouse with 1 loading door (T.I.'S. to suite)
1360	100 E	±2,468	TBD	Creative office, R&D, showroom & warehouse with 1 loading door (T.I.'S. to suite)
1370	103	±2,582	TBD	Lab/creative office, R&D, warehouse with 1 loading door



1340 • 1350 • 1360 • 1370 REYNOLDS
IRVINE, CA

For more information, please contact:



TIM WALKER
office: 949.724.4741
timwalker@lee-associates.com
DRE #: 01218076



HAYDEN TOLAND
cell: 310.903.7821
htoland@lee-associates.com
DRE #: 02215762



MILES TOLAND
cell: 310.903.7806
Mtoland@lee-associates.com
DRE #: 02216740

Visit

www.reynolds-bp.com



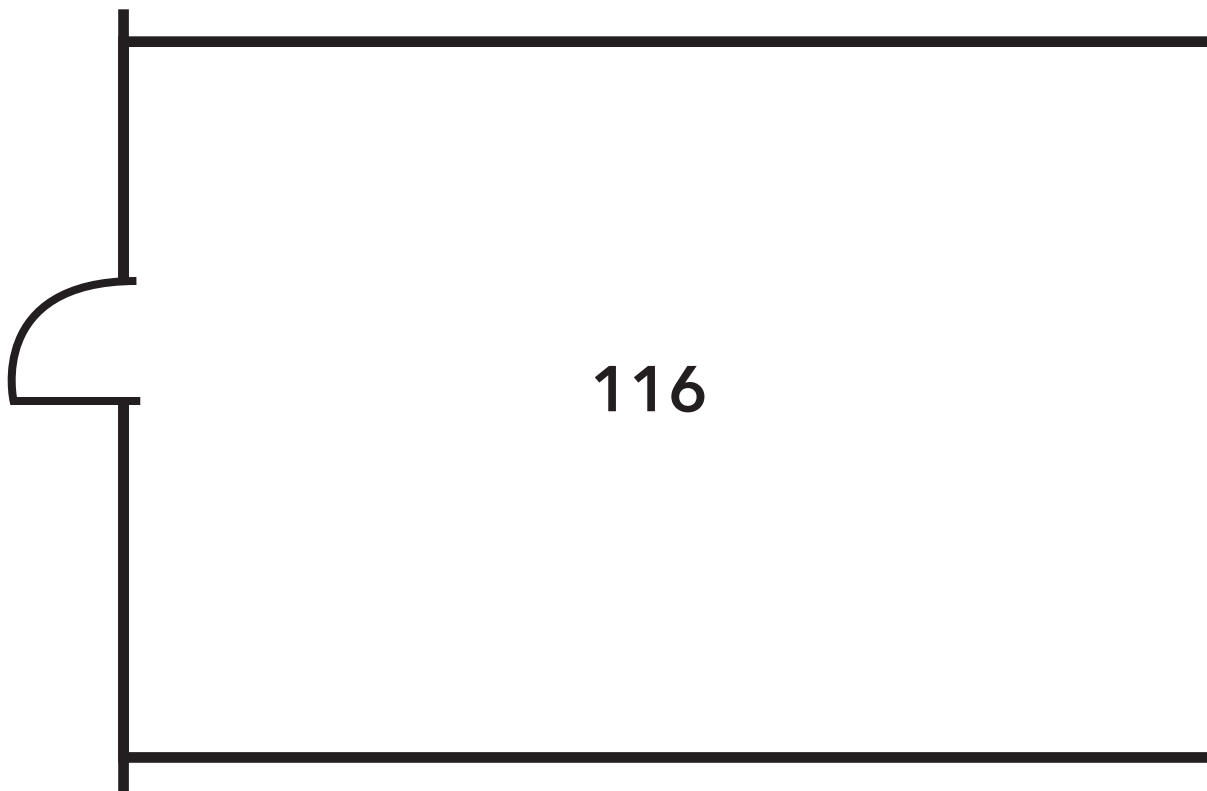
The information contained herein has been obtained from the property owner or other third party and is provided to you without verification as to accuracy. We (Lee & Associates, its brokers, employees, agents, principals, officers, directors and affiliates) make no warranty or representation regarding the information, property, or transaction. You and your attorneys, advisors and consultants should conduct your own investigation of the property and transaction.

REYNOLDS BUSINESS PARK

MULTI-TENANT BUSINESS PARK

FLOOR PLAN

**1340 REYNOLDS
SUITE 116 - ±980 RSF**



For more information, please contact:



TIM WALKER
office: 949.724.4741
timwalker@lee-associates.com
DRE #: 01218076



HAYDEN TOLAND
cell: 310.903.7821
htoland@lee-associates.com
DRE #: 02215762



MILES TOLAND
cell: 310.903.7806
Mtoland@lee-associates.com
DRE #: 02216740

**1340 • 1350 • 1360 • 1370 REYNOLDS
IRVINE, CA**

Visit

www.reynolds-bp.com

**LEE &
ASSOCIATES**
COMMERCIAL REAL ESTATE SERVICES
NEWPORT BEACH

The information contained herein has been obtained from the property owner or other third party and is provided to you without verification as to accuracy. We (Lee & Associates, its brokers, employees, agents, principals, officers, directors and affiliates) make no warranty or representation regarding the information, property, or transaction. You and your attorneys, advisors and consultants should conduct your own investigation of the property and transaction.

REYNOLDS BUSINESS PARK

MULTI-TENANT BUSINESS PARK

FLOOR PLAN - AS BUILT

**1360 REYNOLDS
SUITES 100/200 - ±19,981 RSF**



SECOND FLOOR



FIRST FLOOR

For more information, please contact:



TIM WALKER
office: 949.724.4741
timwalker@lee-associates.com
DRE #: 01218076



HAYDEN TOLAND
cell: 310.903.7821
htoland@lee-associates.com
DRE #: 02215762



MILES TOLAND
cell: 310.903.7806
Mtoland@lee-associates.com
DRE #: 02216740

**1340 • 1350 • 1360 • 1370 REYNOLDS
IRVINE, CA**

Visit

www.reynolds-bp.com

LEE & ASSOCIATES
COMMERCIAL REAL ESTATE SERVICES
NEWPORT BEACH

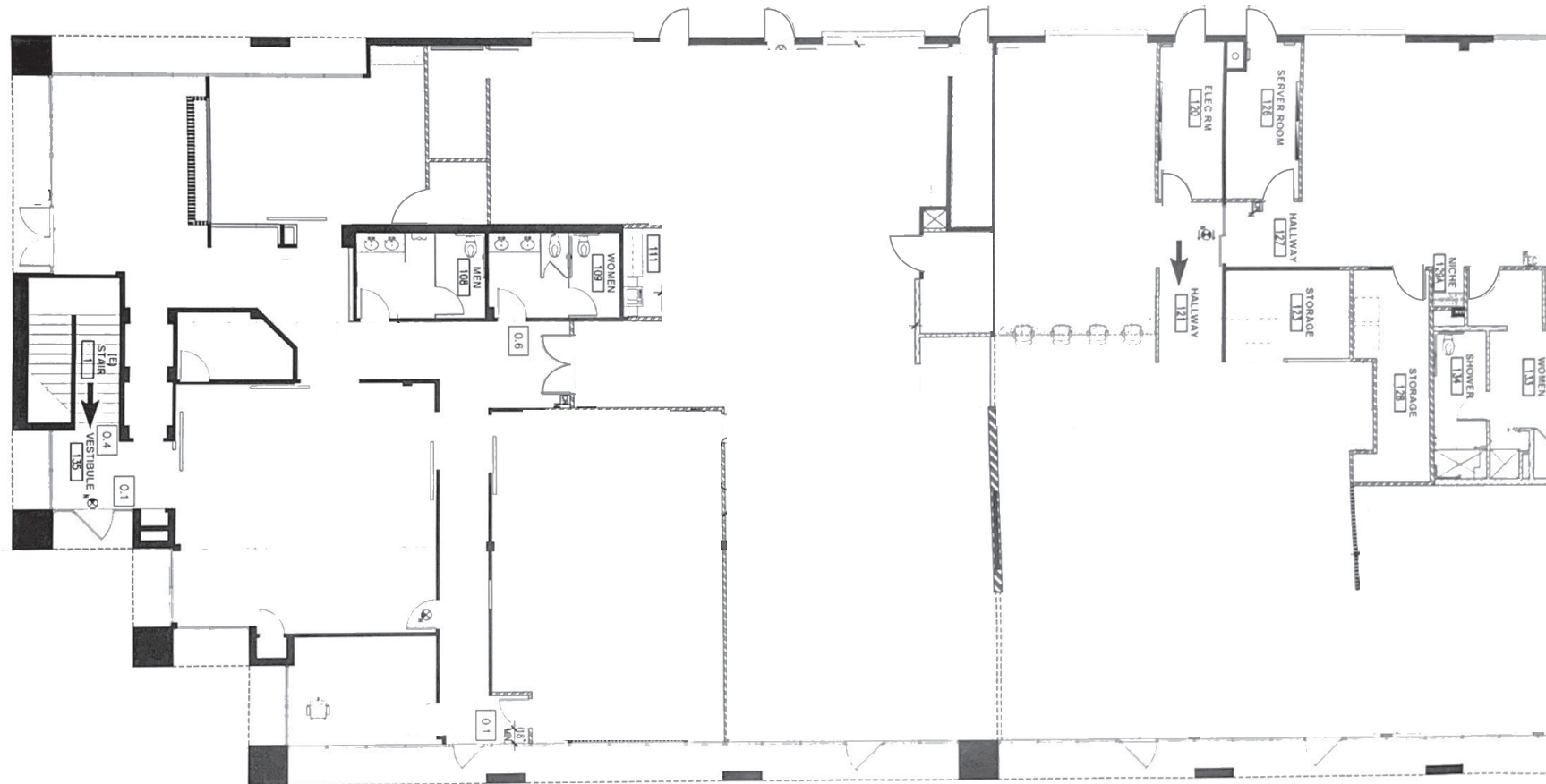
The information contained herein has been obtained from the property owner or other third party and is provided to you without verification as to accuracy. We (Lee & Associates, its brokers, employees, agents, principals, officers, directors and affiliates) make no warranty or representation regarding the information, property, or transaction. You and your attorneys, advisors and consultants should conduct your own investigation of the property and transaction.

REYNOLDS BUSINESS PARK

MULTI-TENANT BUSINESS PARK

FLOOR PLAN

**1360 REYNOLDS
SUITE 100 - ±13,581 RSF**



FIRST FLOOR

For more information, please contact:



TIM WALKER
office: 949.724.4741
timwalker@lee-associates.com
DRE #: 01218076



HAYDEN TOLAND
cell: 310.903.7821
htoland@lee-associates.com
DRE #: 02215762



MILES TOLAND
cell: 310.903.7806
Mtoland@lee-associates.com
DRE #: 02216740

**1340 • 1350 • 1360 • 1370 REYNOLDS
IRVINE, CA**

Visit

www.reynolds-bp.com



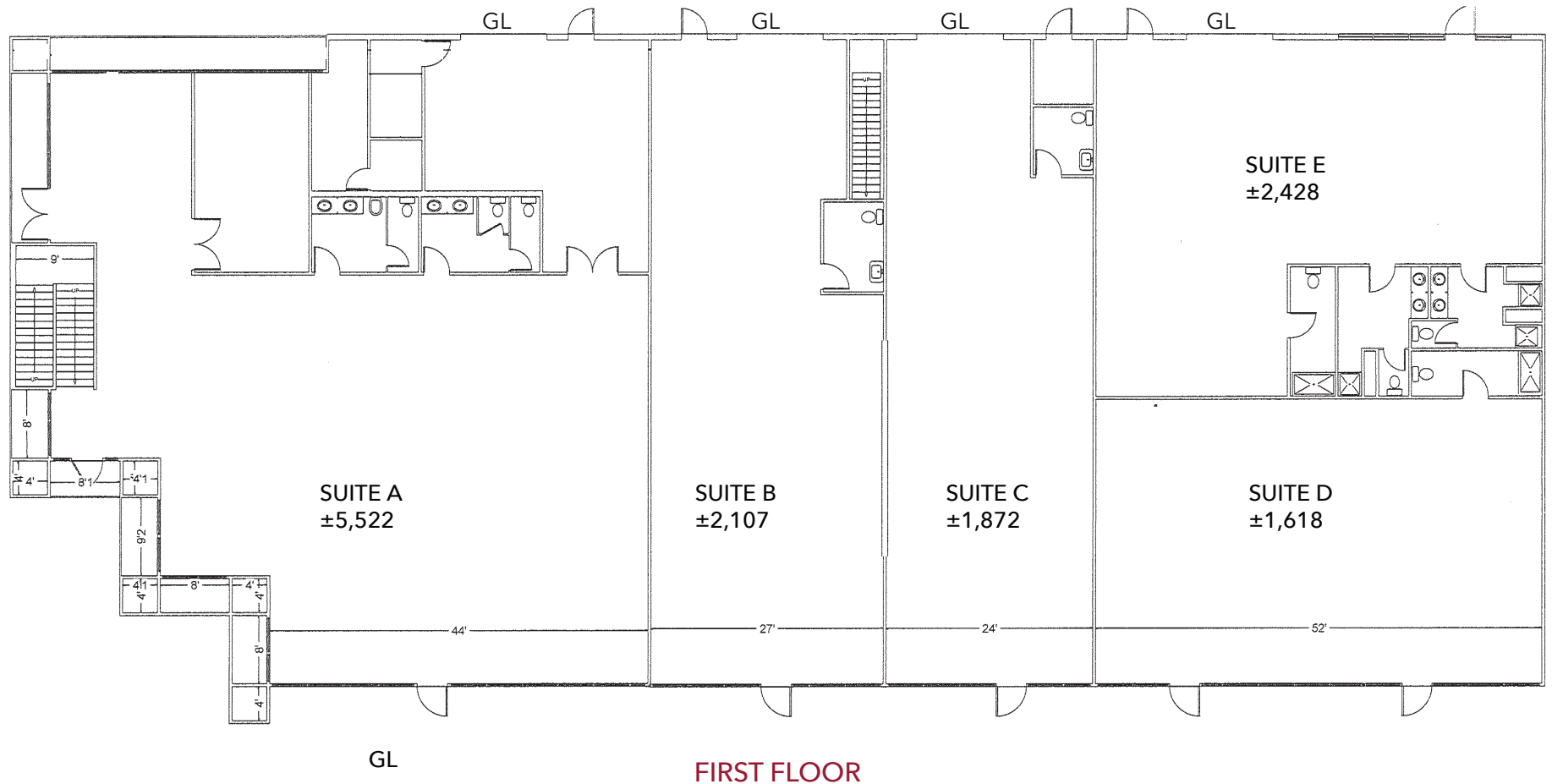
The information contained herein has been obtained from the property owner or other third party and is provided to you without verification as to accuracy. We (Lee & Associates, its brokers, employees, agents, principals, officers, directors and affiliates) make no warranty or representation regarding the information, property, or transaction. You and your attorneys, advisors and consultants should conduct your own investigation of the property and transaction.

REYNOLDS BUSINESS PARK

MULTI-TENANT BUSINESS PARK

FLOOR PLAN

**1360 REYNOLDS
SUITE 100 E - ±2,438 RSF**



FIRST FLOOR

For more information, please contact:



TIM WALKER
office: 949.724.4741
timwalker@lee-associates.com
DRE #: 01218076



HAYDEN TOLAND
cell: 310.903.7821
htoland@lee-associates.com
DRE #: 02215762



MILES TOLAND
cell: 310.903.7806
Mtoland@lee-associates.com
DRE #: 02216740

**1340 • 1350 • 1360 • 1370 REYNOLDS
IRVINE, CA**

Visit

www.reynolds-bp.com

LEE & ASSOCIATES
COMMERCIAL REAL ESTATE SERVICES
NEWPORT BEACH

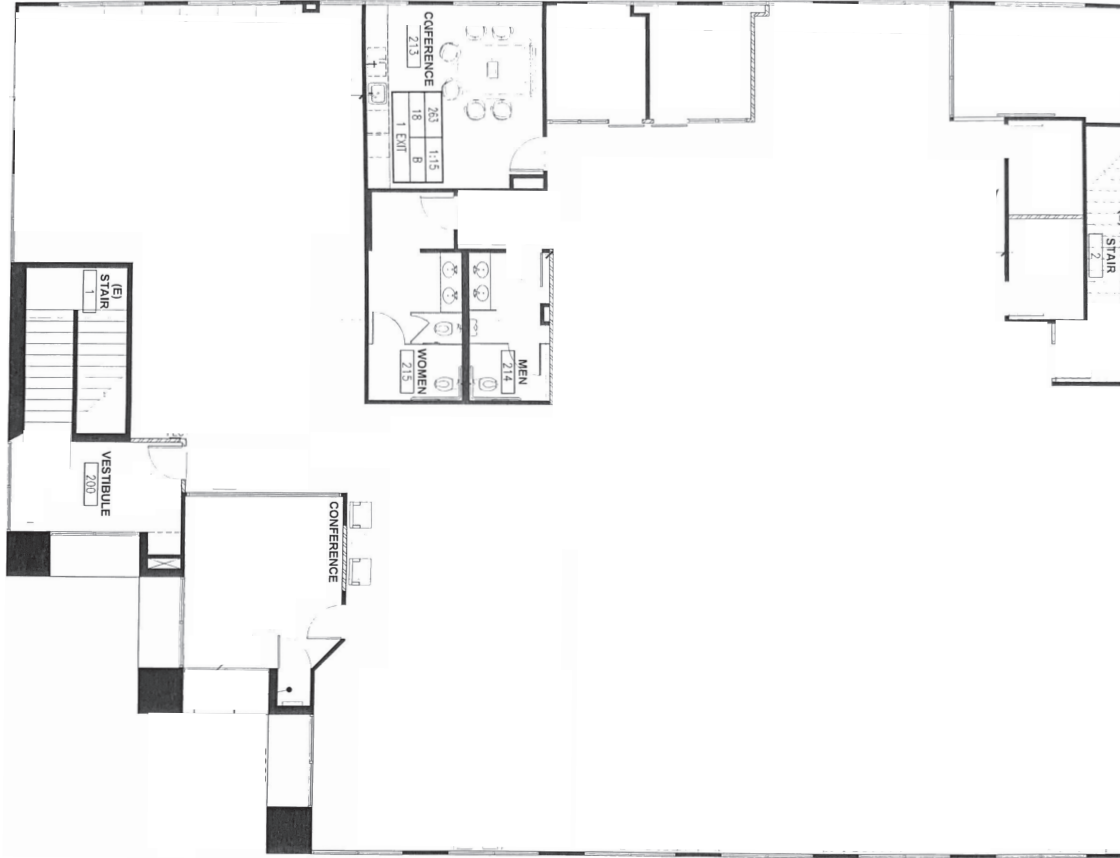
The information contained herein has been obtained from the property owner or other third party and is provided to you without verification as to accuracy. We (Lee & Associates, its brokers, employees, agents, principals, officers, directors and affiliates) make no warranty or representation regarding the information, property, or transaction. You and your attorneys, advisors and consultants should conduct your own investigation of the property and transaction.

REYNOLDS BUSINESS PARK

MULTI-TENANT BUSINESS PARK

FLOOR PLAN

**1360 REYNOLDS
SUITE 200 - ±6,462 RSF**



SECOND FLOOR

For more information, please contact:



TIM WALKER
office: 949.724.4741
timwalker@lee-associates.com
DRE #: 01218076



HAYDEN TOLAND
cell: 310.903.7821
htoland@lee-associates.com
DRE #: 02215762



MILES TOLAND
cell: 310.903.7806
Mtoland@lee-associates.com
DRE #: 02216740

**1340 • 1350 • 1360 • 1370 REYNOLDS
IRVINE, CA**

Visit

www.reynolds-bp.com

LEE & ASSOCIATES
COMMERCIAL REAL ESTATE SERVICES
NEWPORT BEACH

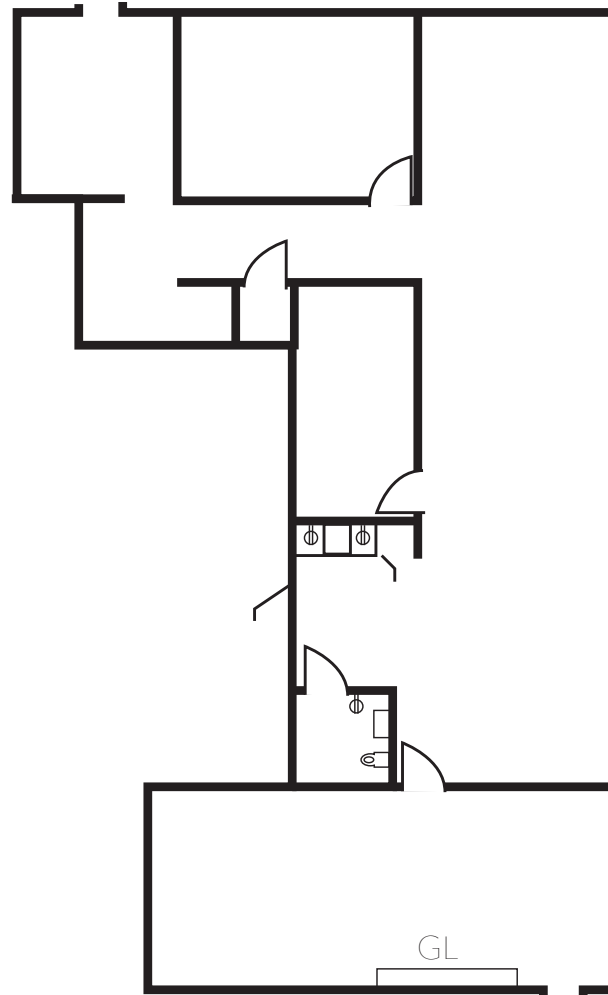
The information contained herein has been obtained from the property owner or other third party and is provided to you without verification as to accuracy. We (Lee & Associates, its brokers, employees, agents, principals, officers, directors and affiliates) make no warranty or representation regarding the information, property, or transaction. You and your attorneys, advisors and consultants should conduct your own investigation of the property and transaction.

REYNOLDS BUSINESS PARK

MULTI-TENANT BUSINESS PARK

FLOOR PLAN

**1370 REYNOLDS
SUITE 103 - ±2,582 RSF**



For more information, please contact:



TIM WALKER
office: 949.724.4741
timwalker@lee-associates.com
DRE #: 01218076



HAYDEN TOLAND
cell: 310.903.7821
htoland@lee-associates.com
DRE #: 02215762



MILES TOLAND
cell: 310.903.7806
Mtoland@lee-associates.com
DRE #: 02216740

**1340 • 1350 • 1360 • 1370 REYNOLDS
IRVINE, CA**

Visit

www.reynolds-bp.com

LEE & ASSOCIATES
COMMERCIAL REAL ESTATE SERVICES
NEWPORT BEACH

The information contained herein has been obtained from the property owner or other third party and is provided to you without verification as to accuracy. We (Lee & Associates, its brokers, employees, agents, principals, officers, directors and affiliates) make no warranty or representation regarding the information, property, or transaction. You and your attorneys, advisors and consultants should conduct your own investigation of the property and transaction.

REYNOLDS BUSINESS PARK

MULTI-TENANT BUSINESS PARK



IRVINE

The City of Irvine was incorporated on December 28, 1971, under the general laws of the State of California. We operate under a charter law form of government which was adopted in 1975, meaning we have a City Council-City Manager form of government. The City Manager is appointed by the City Council to function as the chief administrator of the City. City Council sets the policy directions for the City, and the City Manager is charged with implementing those directions. Additionally, the City Manager keeps the Council informed of City operations, prepares the annual budget, oversees special programs, and coordinates the various department activities.

Irvine is one of the nation's largest planned urban communities and encompasses more than 65 square miles. We contract for fire and medical services with the County of Orange, and have three independent districts: library, educational and utility services. Other government services include: animal control; building and safety regulation and inspection; general administrative services; planning and zoning; police; public facility/capital improvement construction; recreation and cultural programs; refuse collection and recycling; street lighting; street maintenance; landscape maintenance and transportation management.



1340 • 1350 • 1360 • 1370 REYNOLDS
IRVINE, CA

For more information, please contact:



TIM WALKER
office: 949.724.4741
timwalker@lee-associates.com
DRE #: 01218076



HAYDEN TOLAND
cell: 310.903.7821
htoland@lee-associates.com
DRE #: 02215762



MILES TOLAND
cell: 310.903.7806
Mtoland@lee-associates.com
DRE #: 02216740

Visit

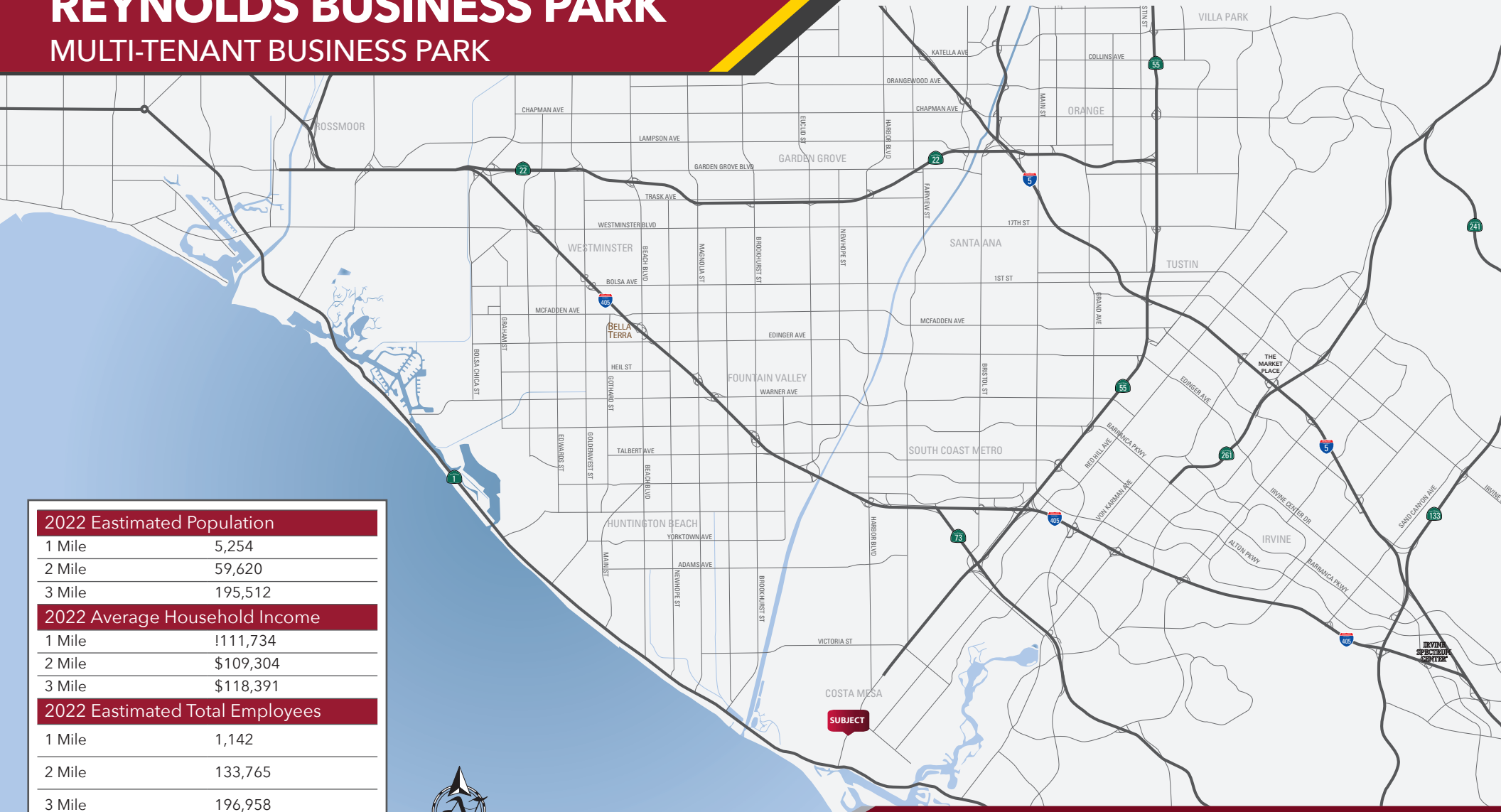
www.reynolds-bp.com

LEE & ASSOCIATES
COMMERCIAL REAL ESTATE SERVICES
NEWPORT BEACH

The information contained herein has been obtained from the property owner or other third party and is provided to you without verification as to accuracy. We (Lee & Associates, its brokers, employees, agents, principals, officers, directors and affiliates) make no warranty or representation regarding the information, property, or transaction. You and your attorneys, advisors and consultants should conduct your own investigation of the property and transaction.

REYNOLDS BUSINESS PARK

MULTI-TENANT BUSINESS PARK



2022 Eastimated Population

1 Mile	5,254
2 Mile	59,620
3 Mile	195,512

2022 Average Household Income

1 Mile	!111,734
2 Mile	\$109,304
3 Mile	\$118,391

2022 Eastimated Total Employees

1 Mile	1,142
2 Mile	133,765
3 Mile	196,958



**1340 • 1350 • 1360 • 1370 REYNOLDS
IRVINE, CA**

For more information, please contact:



TIM WALKER
office: 949.724.4741
timwalker@lee-associates.com
DRE #: 01218076



HAYDEN TOLAND
cell: 310.903.7821
htoland@lee-associates.com
DRE #: 02215762



MILES TOLAND
cell: 310.903.7806
Mtoland@lee-associates.com
DRE #: 02216740

Visit
www.reynolds-bp.com



The information contained herein has been obtained from the property owner or other third party and is provided to you without verification as to accuracy. We (Lee & Associates, its brokers, employees, agents, principals, officers, directors and affiliates) make no warranty or representation regarding the information, property, or transaction. You and your attorneys, advisors and consultants should conduct your own investigation of the property and transaction.